

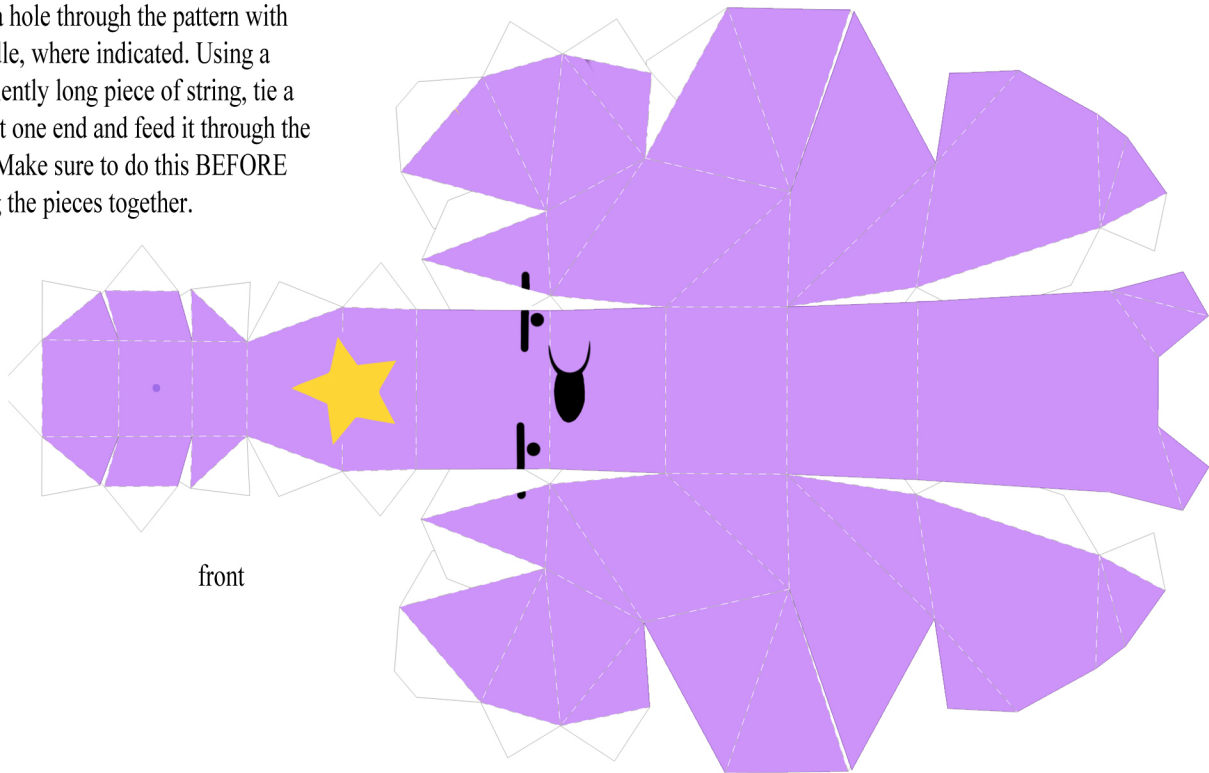


Lumpy Space Princess

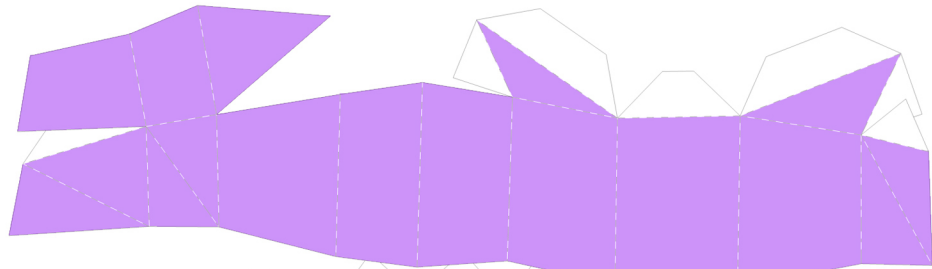


This model was made by Emily McLain
<http://be.net/EmilyMcLain>
emclainable@gmail.com

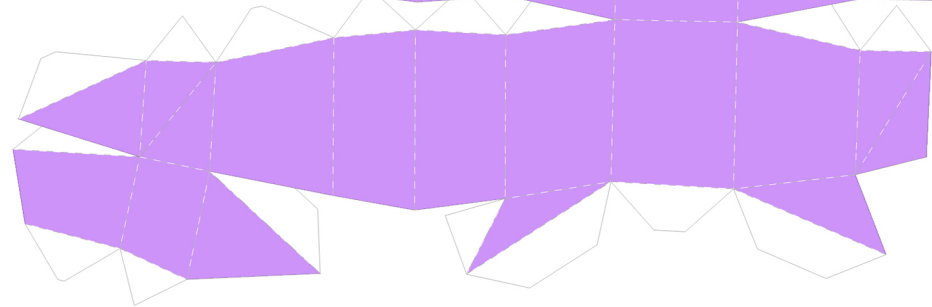
If you wish to hang LSP up by string, poke a hole through the pattern with a needle, where indicated. Using a sufficiently long piece of string, tie a knot at one end and feed it through the hole. Make sure to do this BEFORE gluing the pieces together.



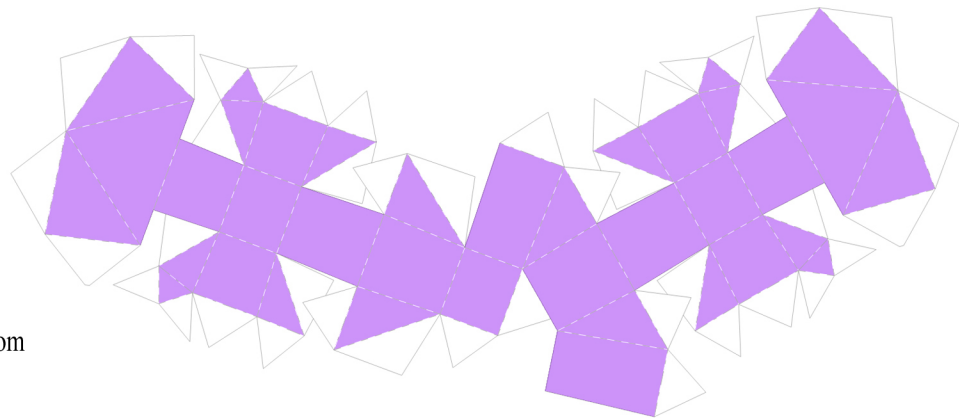
front

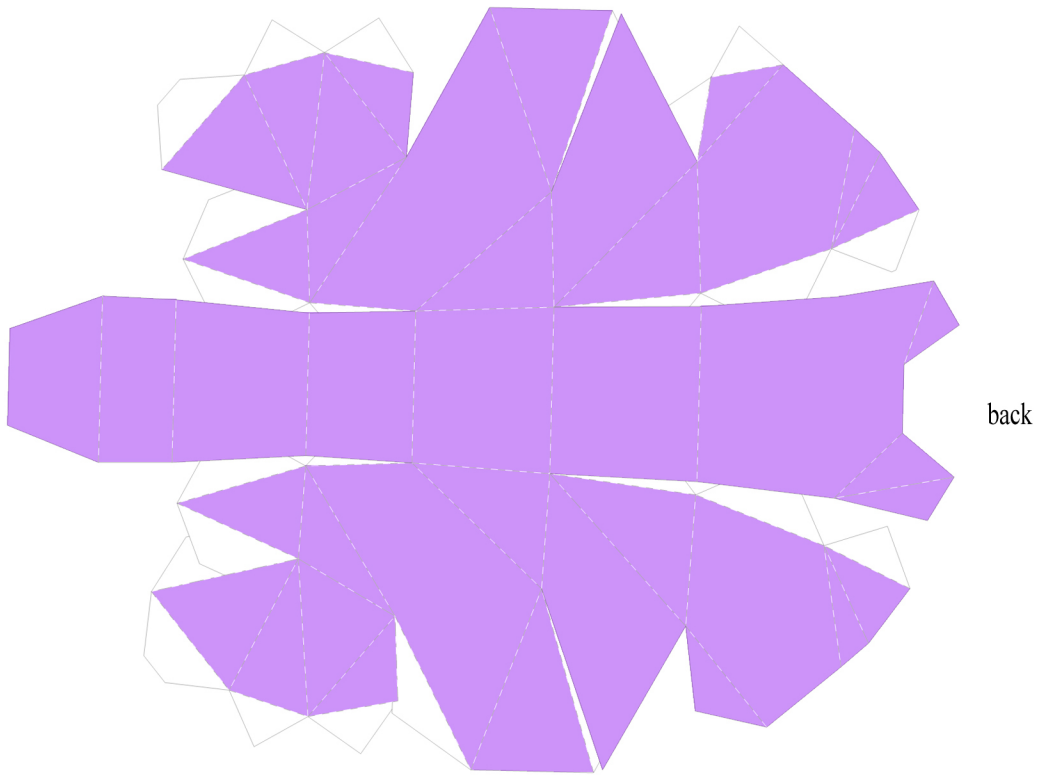


left side

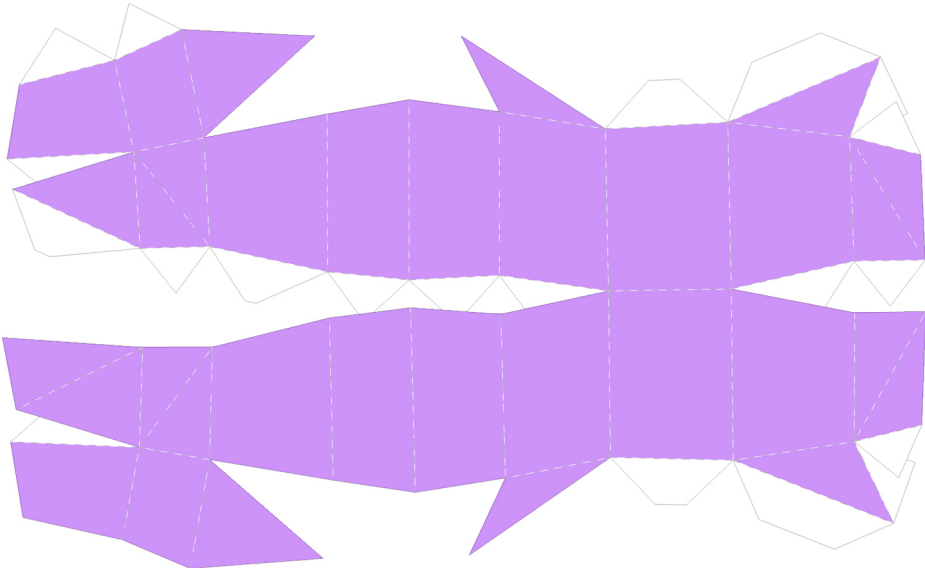


bottom

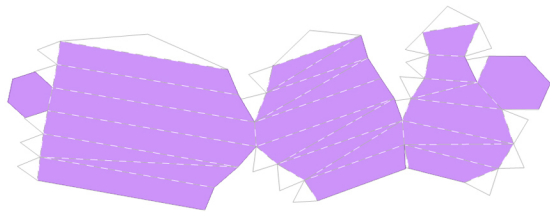




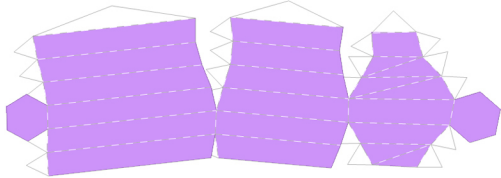
back



right side



left arm



right arm